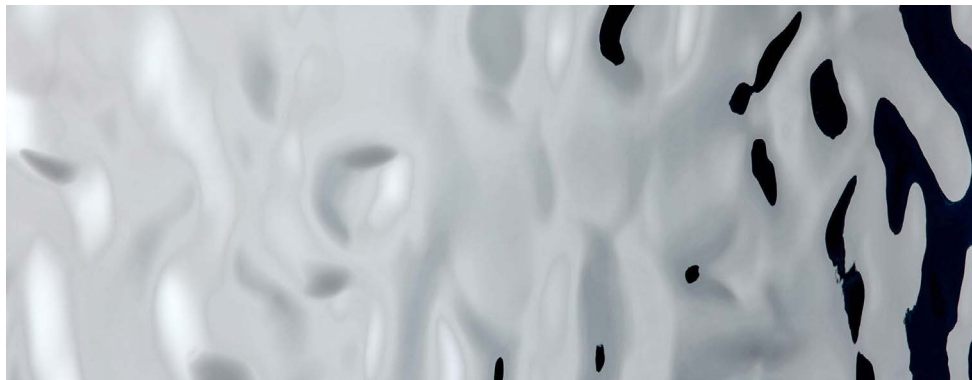


# ELEMENTS

OCEANO

Materials<sup>inc</sup>  
mi source for interiors



COLLECTION & TECHNICAL DATA

**2** INDEX

**3**

D.STR.E.840

OCEANO

**4**

TROMONTO

D.STR.E.841

**5**

OCEANO  
ANTHRACITE

D.STR.E.842

**6**

OCEANO  
ARGENTO

D.STR.E.843

**7**

CHARACTERISTICS &

**8**

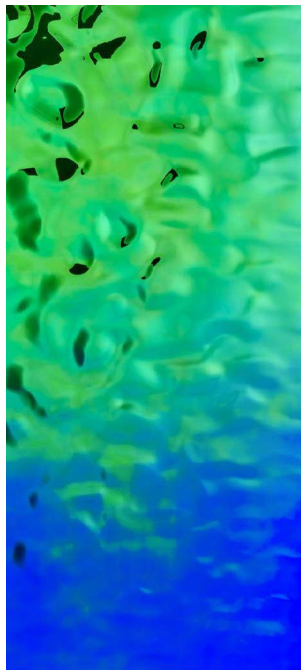
PROCESSING



# OCEANO ACQUA

D.STR.E.840

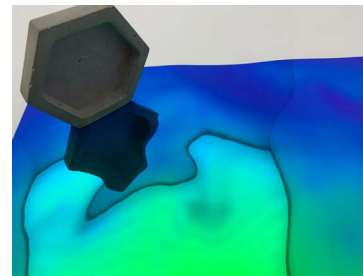
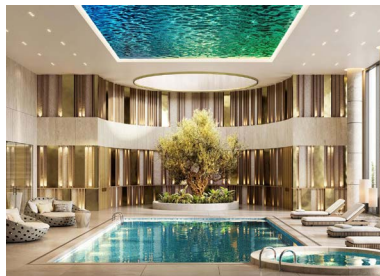
Materials inc  
mi source for interiors



available in  
-self-adhesive  
-laminare

Environment  
**Interior**

Dimension  
102" x 39"



# OCEANO TRAMONTO

D.STR.E.841

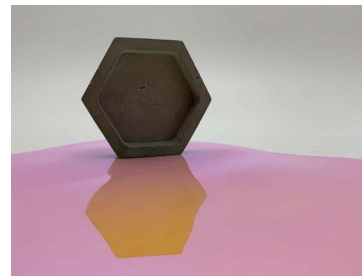
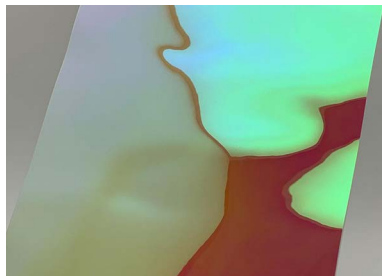
Materials inc  
mi source for interiors



available in  
**-self-adhesive**  
**-laminare**

Environment  
**Interior**

Dimension  
**102" x 39"**



# OCEANO ANTHRACITE

D.STR.E.842

Materials inc  
mi source for interiors



available in  
**-self-adhesive**  
**-laminare**

Environment  
**Interior**

Dimension  
**102" x 39"**



# OCEANO ARGENTO

D.STR.E.843

Materials inc  
mi source for interiors



available in  
**-self-adhesive  
-laminare**

Environment  
**Interior**

Dimension  
**102" x 39"**



## PRODUCT CHARACTERISTICS

	Laminate	Self-Adhesive
<b>Surface material</b>	PET	
<b>Base material</b>	HIPS	
<b>Material thickness mm</b>	2,0	2,24
<b>Max. relief height mm</b>	8,0	8,24
<b>Temperature resistance</b>	until 122 °F	
<b>Wet room suitability</b>	■■■□□	
<b>Abrasion resistance Anthracite</b>	■■■■■□	
<b>Abrasion resistance</b>	■■□□□□□	
<b>Rolled packable</b>	—	
<b>Smallest bending radius mm</b>	1000	
<b>Weight/ panel kg</b>	~ 5,7	~ 6,6

## PROCESSING

	Laminate	Self-Adhesive
<b>Cutting</b>	✓	
<b>Punching</b>	On request	
<b>Drilling</b>	✓	
<b>Sawing, milling</b>	✓	—
<b>Laser cutting</b>	✓	
<b>Hot banding</b>	On request	—
<b>PVA pressing</b>	—	
<b>Digital printing</b>	✓*	
<b>Screen printing</b>	—	

\* own printing test required, samples are gladly provided.

**EXTRA EQUIPMENT | ACCESSORIES**

	Laminate	Self-Adhesive
<b>Glue recommendation</b>	neutral freely cross- linked silicone or MS polymer hybrid adhesive	—
<b>PVA pre-treatment</b>	—	
<b>Further thickness</b>	On request	
<b>Magnetic from 3 sheets</b>	—	

	Laminate	Self-Adhesive
<b>Flammability ASTM E84</b>	On request	
<b>Flammability EN13501-1</b>	On request	